



Hall Moss Lane, Bramhall

Community Consultation Leaflet

Jones Homes is preparing an outline planning application for the development of around 250 family homes at land off Hall Moss Lane, Bramhall.

Our aspiration is to deliver an attractive residential development close to the heart of Bramhall with a range of family homes which will contribute towards addressing a shortfall in housing in Stockport.

Our proposals will deliver both market and affordable housing in a sustainable location alongside an integrated network of public open space, green connections, and walking and cycling infrastructure.

As one of the UK's leading independent home builders, Jones Homes has been creating desirable new homes since 1959.

In 2024, we were awarded a 5* rating in the Home Builders Federation new home customer satisfaction survey, which means that at least 90 per cent of our buyers would recommend us to a friend.

Before submitting a planning application to Stockport Metropolitan Borough Council, we would like to hear your views.



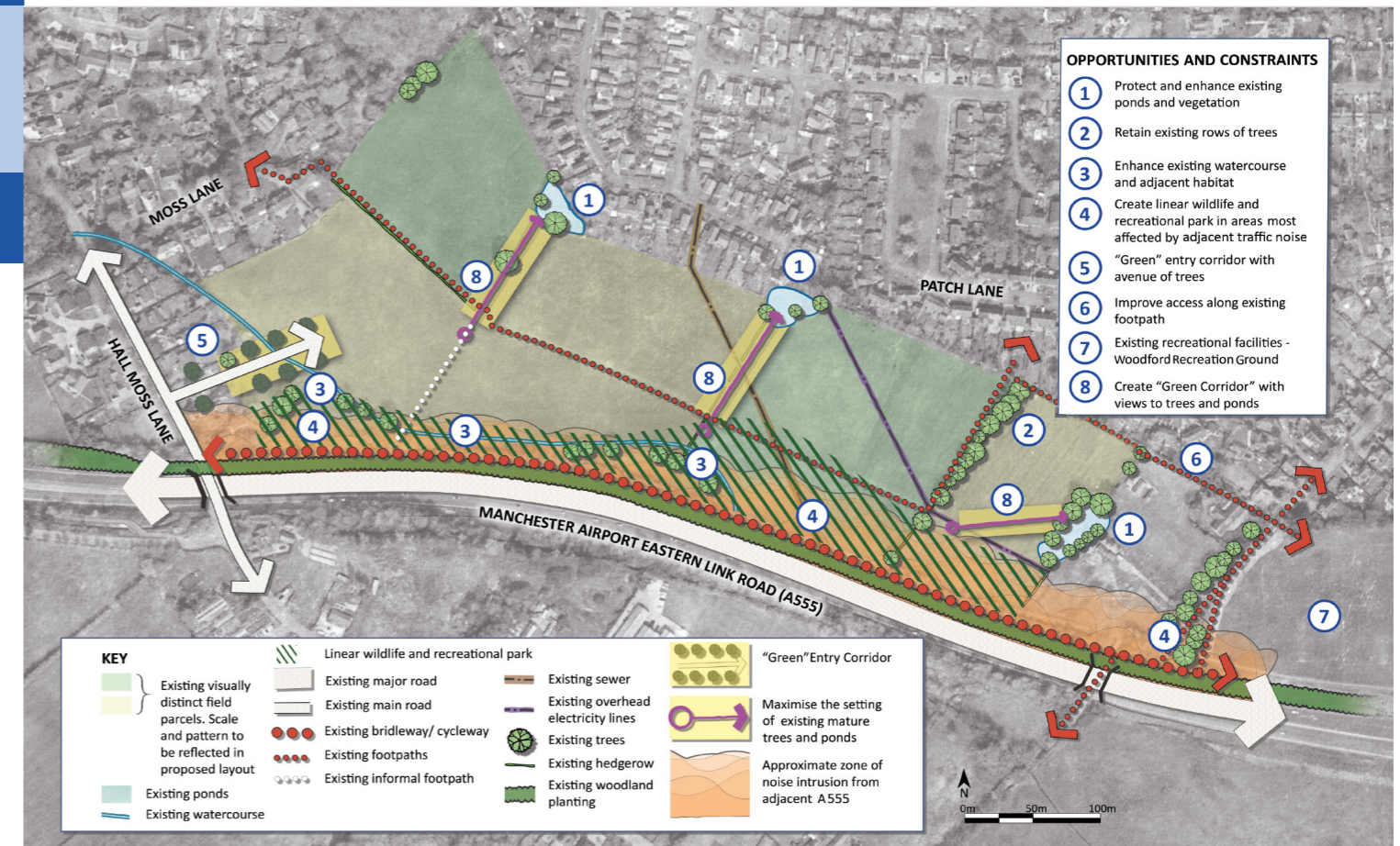
Delivering an attractive residential development

Key Benefits and Features

Land off Hall Moss Lane can accommodate a sustainable form of development including the following key features and benefits:

- **Approximately 250 new high-quality family homes** that integrate well with the surrounding built development
- **A range of property types** to suit the needs of local people including homes suitable for first time buyers and aspirational homes
- **50 per cent of the new homes will be affordable**, comprising intermediate and social rent housing
- **Provision of a new linear park** and nature conservation area, thereby creating a strong sense of place
- **Provision of a range of recreational facilities** including a Local Equipped Area for Play ('LEAP') and two Local Areas for Play ('LAP')
- **Extensive landscaping** throughout the development and the retention of trees and hedgerows where possible
- **A minimum 10 per cent Biodiversity Net Gain**

- **Financial contributions** towards supporting infrastructure
- **Substantial social and economic benefits** through the creation of construction jobs and increased population which brings with it expenditure, helping to preserve the long-term sustainability of local jobs, schools, shops and other services and facilities



Share Your Views

Your views are important to us. We want to know what the local community thinks of these plans, and so this is your opportunity to share your views.

Please write to us with your views by **23 March 2025** using the contact details below to ensure they can be taken into consideration before the application is submitted to Stockport Metropolitan Borough Council.

You will have a further opportunity to comment on the proposals when the Council conducts its own statutory formal consultation once the planning application has been submitted and validated.

We look forward to hearing from you.



hallmosslane.bramhall@stantec.com



Jones Homes c/o Stantec, 100 Barbirolli Square, Manchester, M2 3PW

